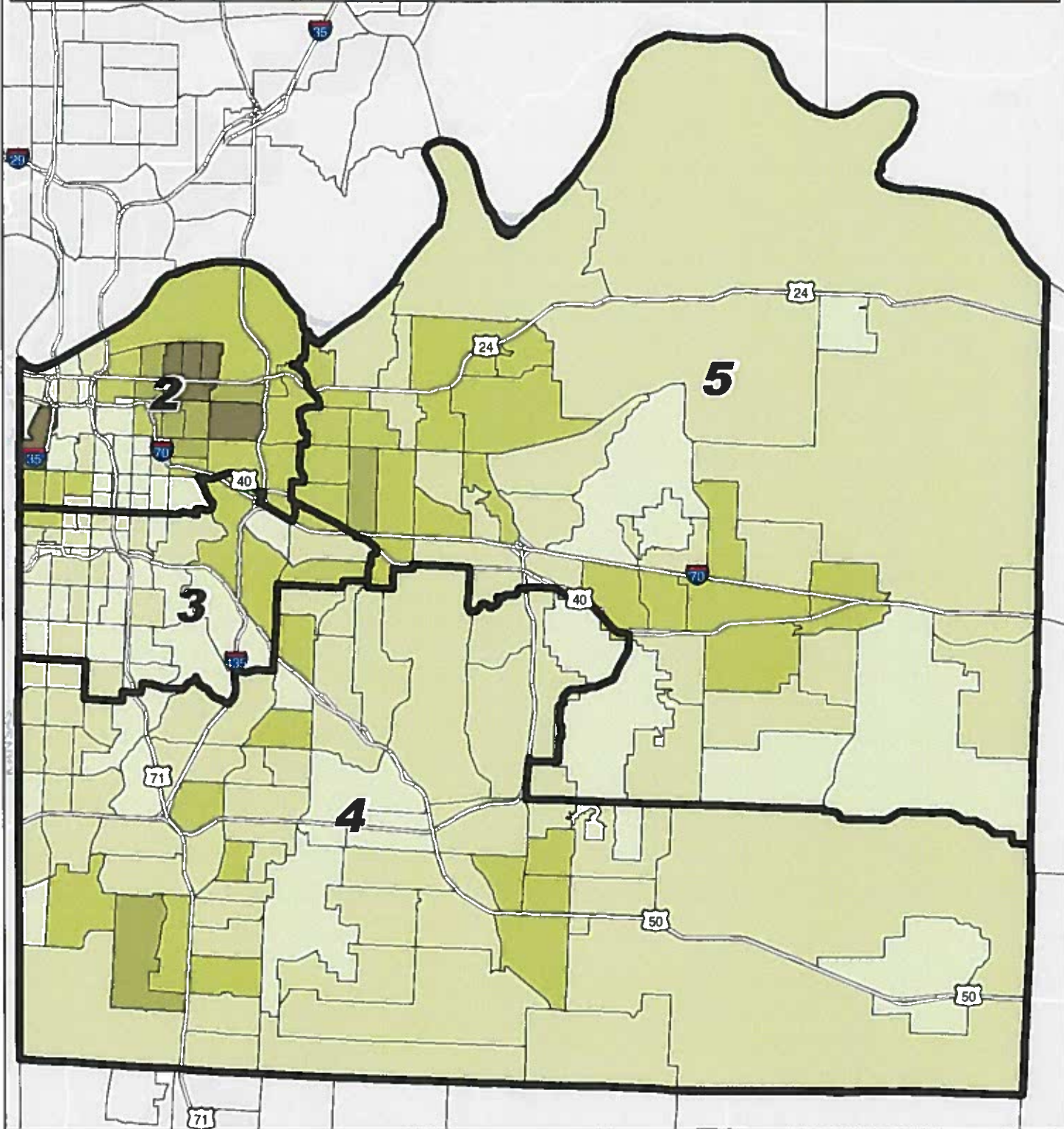
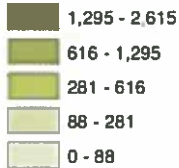


Hispanic Population



**Number of Hispanic
by Census Tract**

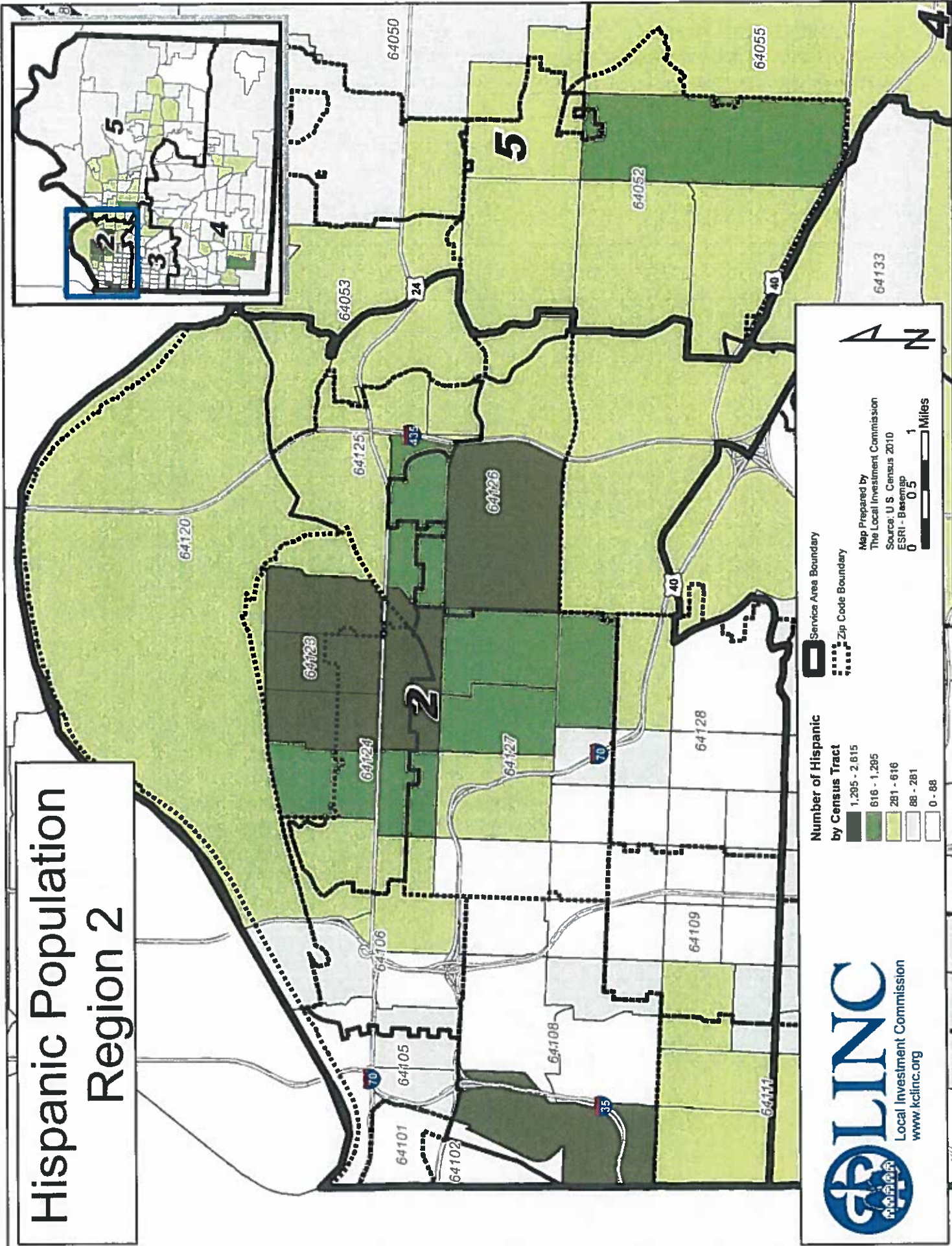


Map Prepared by
The Local Investment Commission

Source: U.S. Census 2010
ESRI - Basemap



Hispanic Population Region 2



Local Investment Commission
www.kclinc.org

**Number of Hispanic
by Census Tract**

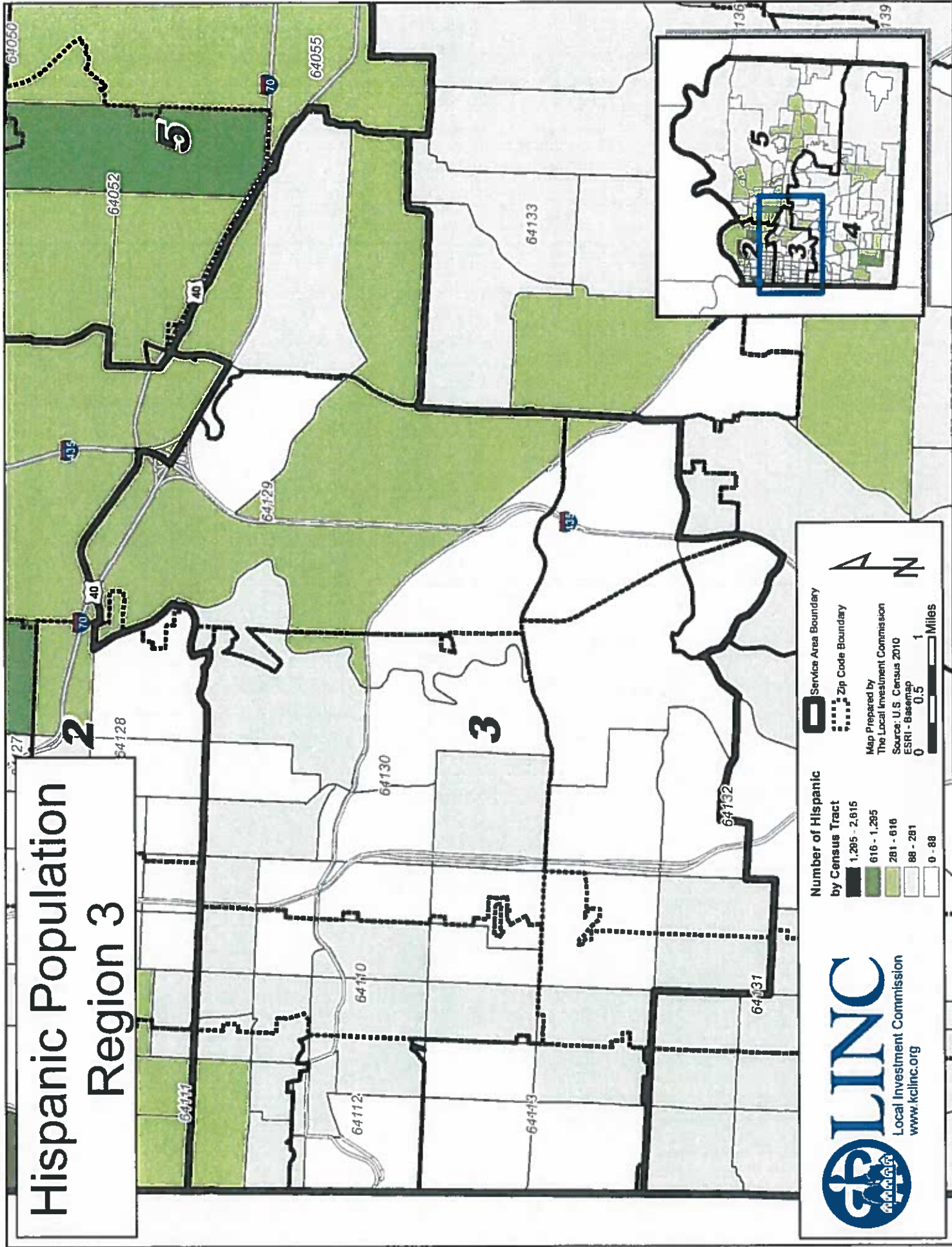
- 1,285 - 2,615
- 616 - 1,285
- 281 - 616
- 88 - 281
- 0 - 88

Service Area Boundary
 Zip Code Boundary

Map Prepared by
 The Local Investment Commission
 Source: U.S. Census 2010
 ESRI - Basemap
 0 0.5 1 Miles



Hispanic Population Region 3



Number of Hispanic by Census Tract

- 1,285 - 2,615
- 616 - 1,285
- 281 - 616
- 88 - 281
- 0 - 88

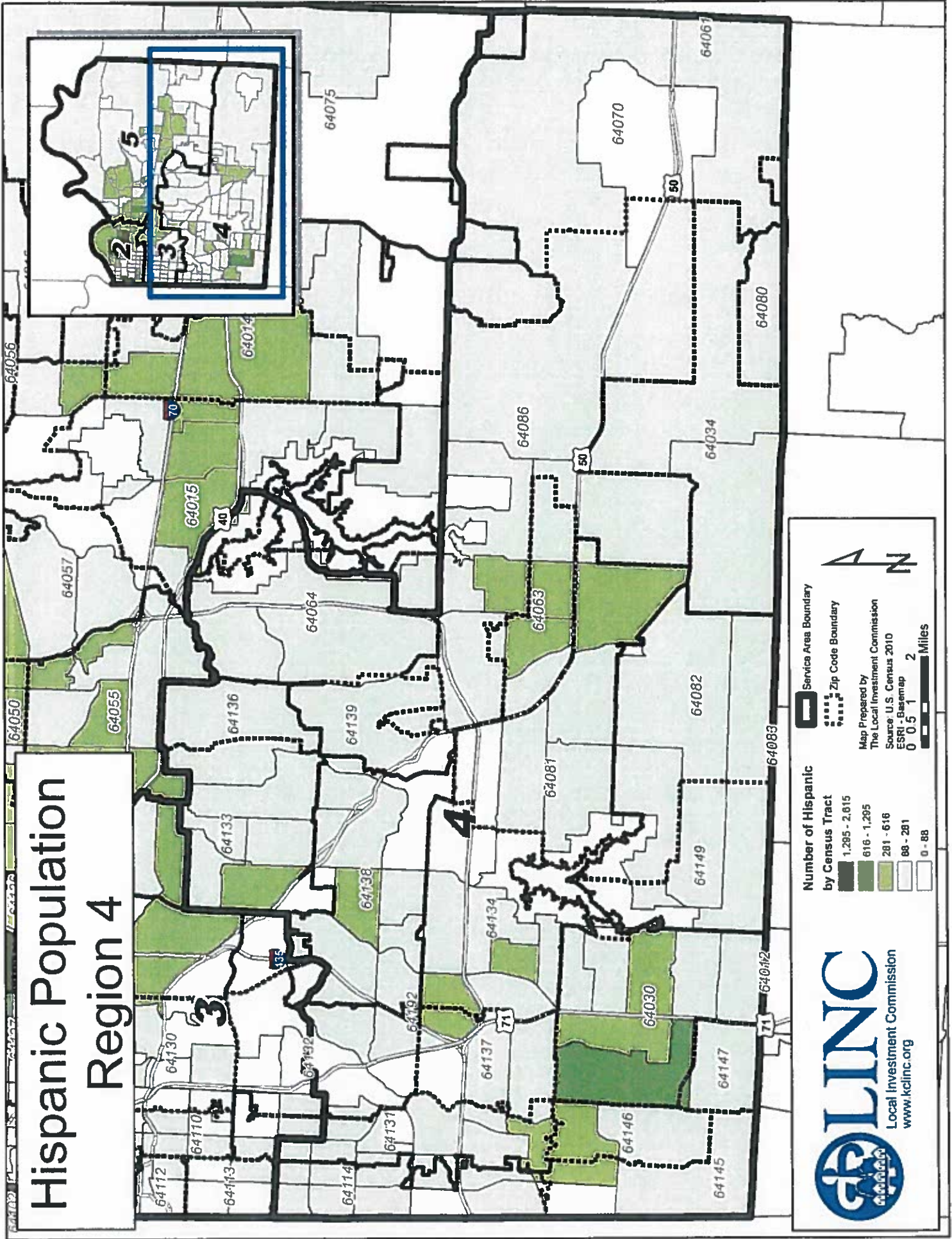
Service Area Boundary
 Zip Code Boundary

Map Prepared by
 The Local Investment Commission
 Source: U.S. Census 2010
 ESRI - BaseMap

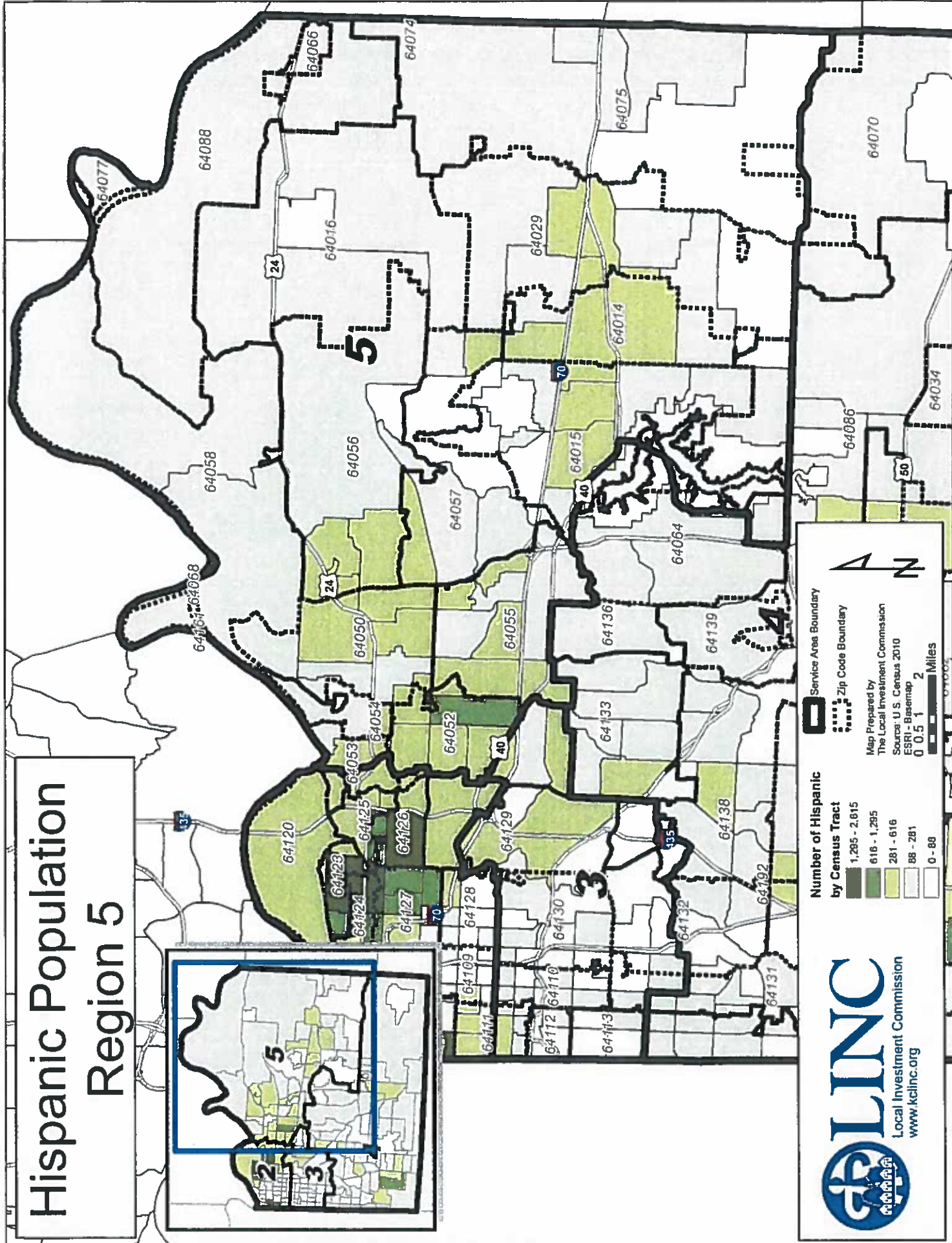
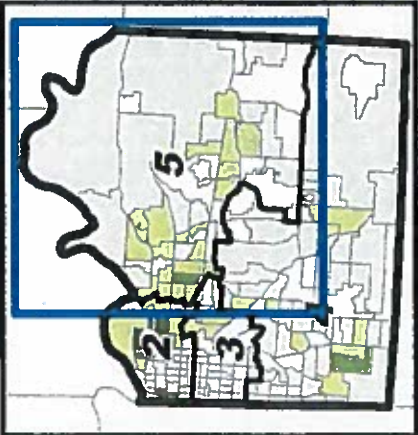
North Arrow
 0 0.5 1 Miles



Hispanic Population Region 4



Hispanic Population Region 5



Number of Hispanic by Census Tract

- 1,295 - 2,915
- 616 - 1,295
- 281 - 616
- 88 - 281
- 0 - 88

Map Prepared by:
The Local Investment Commission
Source: U.S. Census 2010
ESRI - Basemap 2

Legend:

- Service Area Boundary
- Zip Code Boundary

Scale: 0 0.5 1 2 Miles

North Arrow: N

