



# COMMUNITY MENTAL HEALTH FUND

---

Implementing Value-Based Payment  
Introduction  
March 2023

# Implementing Value-Based Payment Introduction

---



New Payment system in the works since 2016



Changes the focus from volume of services to using financial incentive for measuring and improving quality.



It's voluntary. Driven by our missions and values



2023 Full implementation begins



# CMHF Payment: Building Blocks

Gray: Fee For Service (FFS)  
Core contract based on units  
delivered.

Blue: Data-based, we  
provide some support for  
data collection and  
reporting.

Green: Growth in financial  
support focused on key  
performance indicators  
(KPIs).

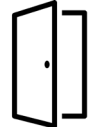


Data Collection  
and Delivery

Units/Base  
Contract

# Performance Domain Areas

- Goals and KPI measure a mission critical goal.
- Offer choices that make sense to your agency and mission. Use existing information wherever possible.
- Can be defined broadly – in a program that has many services, or narrowly – for one service.



Access to Care



Clinical or Functional Outcomes



Participant Experience



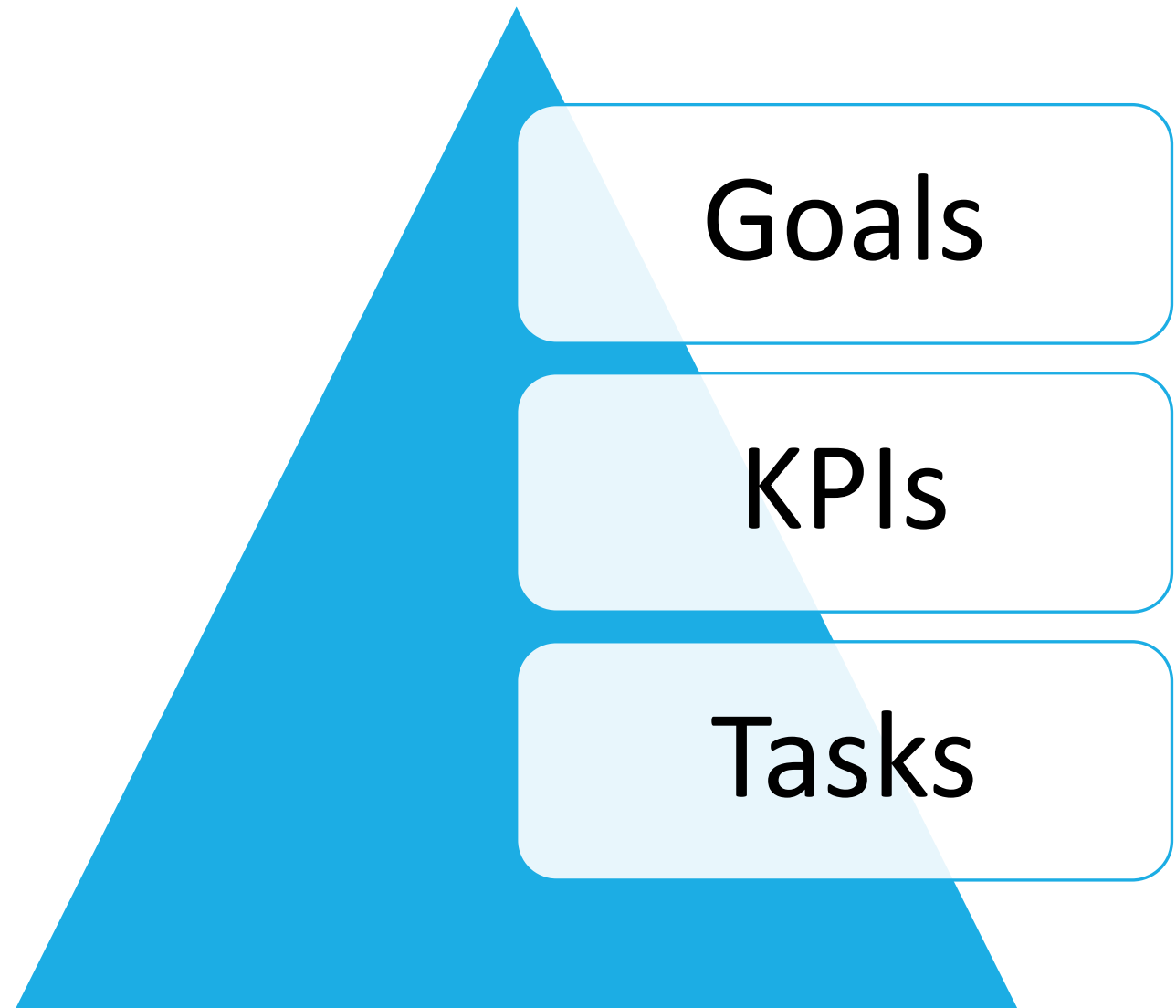
Staff experience and retention



Future: DEI

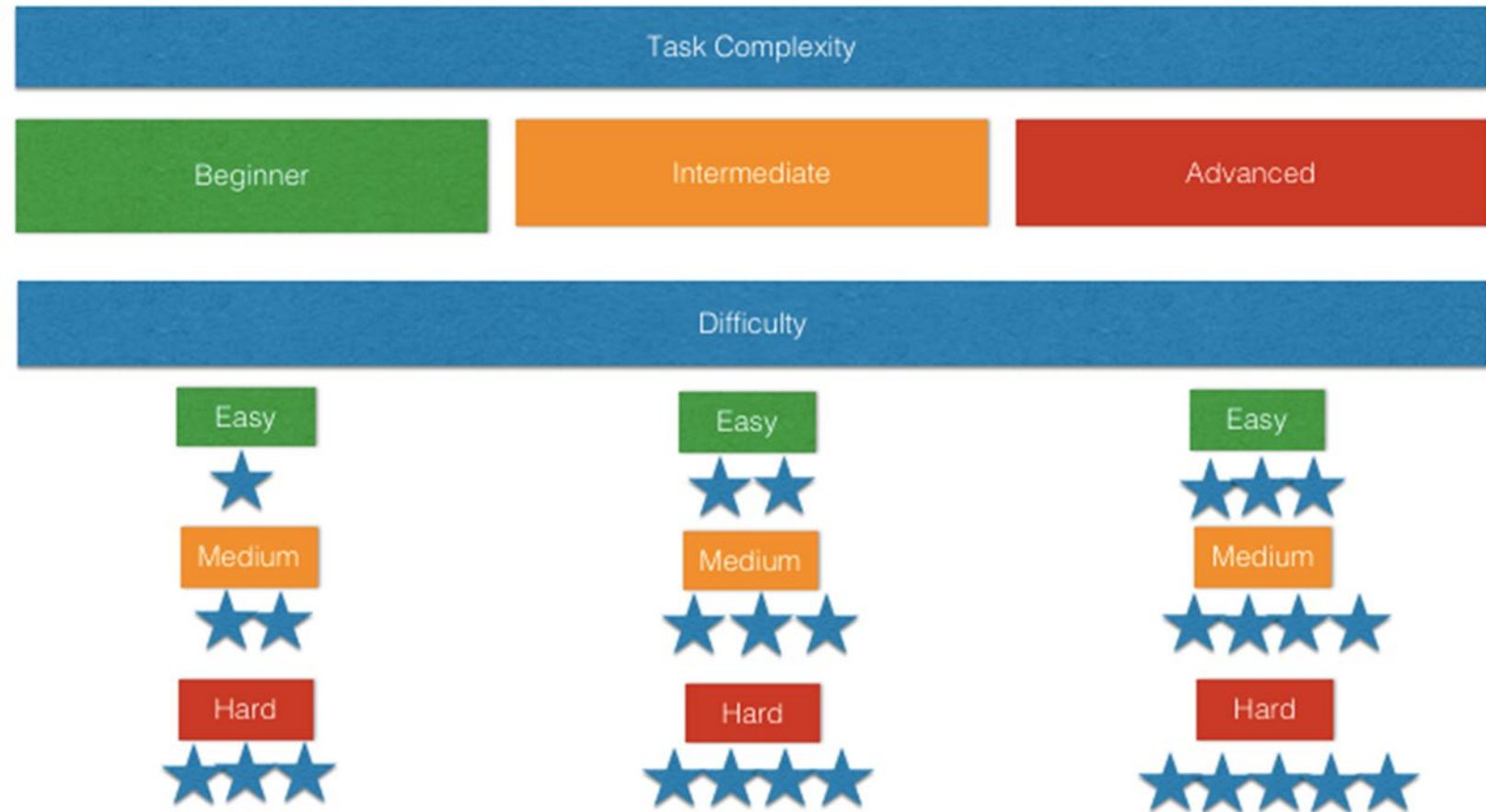
# Value Based Payment

## Performance Model



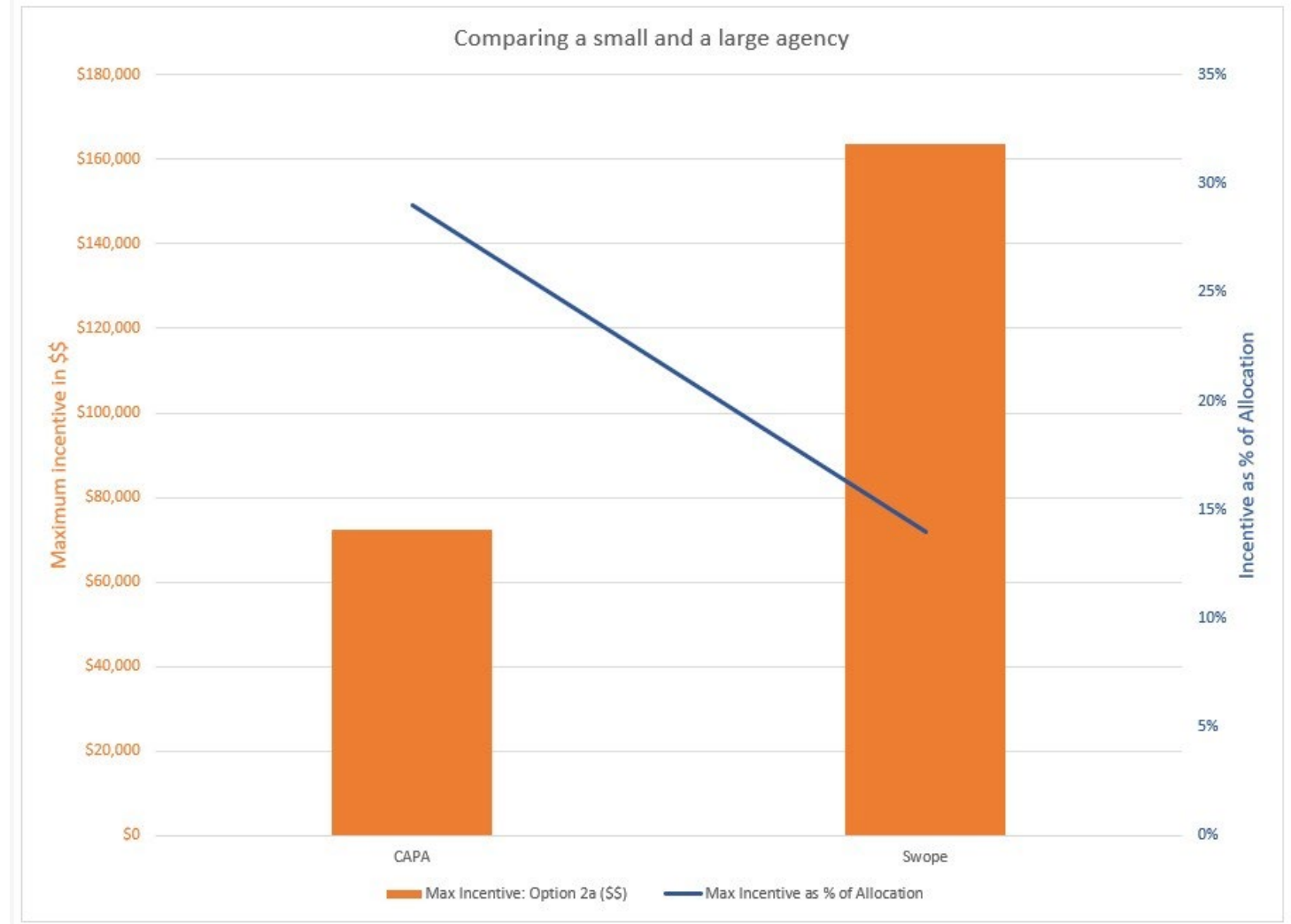
# KPI Scoring Model

- Agencies can work at difficulty levels from basic to robust.
- Tasks are reported quarterly to earn points. Points are used to calculate an incentive payment.



# Payment Calculations

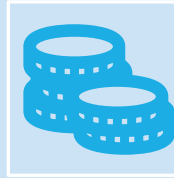
- The graduated percentage model means smaller agencies can get a meaningful performance payment. And the payments for larger agencies are within our budget.
- Board emphasized equity in performance payments.



# Performance Payment



The performance payment dollars are more flexible than our fee for service payments.



In 2022 we paid more than \$900 thousand in incentives across 19 agencies to develop their capacity to participate in VBP.



Successful implementation of VBP is important. We will continue to invest in the ability of our staff and consultants to support your efforts in areas like collecting, managing, reporting data.



# Rapid Cycle Improvement

- Data is important
- Collection and reporting are important
- But it gets exciting when we work together to use the data
- A process to improve services that benefit our participants, community, and
- Help you carry out your mission



# CMHF Assistance to Agencies

- Steps to  
Rollout



Step 1: Goal and KPI Report Form with Dashboard

Step 2: Tasks Forms and Point Assignment Information

Reporting Dates: July 31, 2023, October 31, 2023, January 31, 2024.

Assistance is available from Liaisons at any time

Payment for 2023 activity made Quarter 1, 2024



COMMUNITY  
**MENTAL HEALTH**  
FUND

---

[www.jacksoncountycares.org](http://www.jacksoncountycares.org)