



Community Connections — February 2026

Board of Trustees Names Theresa Reyes-Cummings Executive Director

Theresa, who has served as Deputy Director for 20 years, will use her diverse skills and experience to continue leading the Board and staff in the Fund's efforts to advance mental health access, health equity, and innovative grantmaking.

Theresa Reyes-Cummings has been promoted by the Board of Trustees to Executive Director of the Community Mental Health Fund (CMHF). As Deputy Director, her vision led to the Fund's creation of a value-based performance initiative many agencies now use to demonstrate the impact of their mental health grants.

A longtime Latina leader with 30+ years in government, nonprofit and healthcare leadership roles, she will lead CMHF as a credentialed national grant professional (GPC), with experience in finance, human relations, technology, strategic initiatives, advocacy, and community development. Outside of work, she's active on local and national boards, is a real-estate investor, enjoys trail running, weightlifting, and values faith, family, and friends.



Network Spotlight: Sisters in Christ

Get to know your network! Each month, CMHF highlights one of our partner agencies to help build connections and share their stories.



What began in 1997 as four co-workers praying together at home has evolved into a holistic, community-focused organization that provides support, advocacy, and resources to formerly incarcerated women on the road to rebuilding their lives.

Today, Sisters in Christ offers transitional supportive housing, mental health services, workforce development, and youth programs designed to connect the next generation with positive pathways to making healthy, constructive life choices.

The agency's three transitional homes in Kansas City's urban core are accredited by the National Alliance for Recovery Residences (NARR) and certified by the Missouri Department of Health to ensure the highest standards of care.



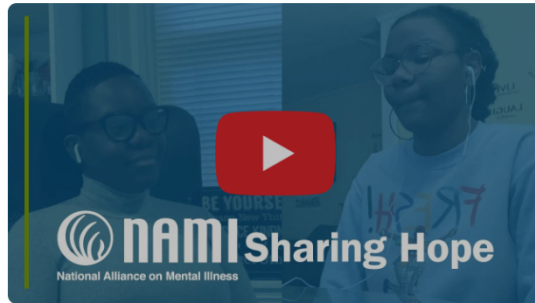
Meet Erica Fisher, LCSW, LSCSW

As a Therapist Coordinator at Sisters in Christ, Erica sees women move past the experiences that have shaped their lives and open doors to strengths, skills, and futures that transform them and their families.

Erica and her fellow staff members guide participants' journeys — in part by collaborating and respecting each other to lead by example. The support they foster helps women restore their lives ... one breakthrough at a time.

[Read Erica's conversation](#)

February is Black History Month



Mental health-related trauma in the Black community takes many forms, but so can journeys toward recovery. NAMI's 'Sharing Hope' series offers three powerful videos with ways to start the healing.

[Visit the Sharing Hope page](#)

Network News

Two new programs offered by [Reconciliation Services](#) — REVEAL Works and a Parenting Support Group — provide training and support for participants striving to improve their lives.



REVEAL Works is a six-month, trauma-informed workforce development program in which participants are hired as paid employees at [Thelma's Kitchen](#) while receiving holistic support. Through hands-on training and individualized care, participants build transferable skills, stability, and a path toward long-term employment.

Every parent deserves to be supported, understood, and empowered, and participants find all three in the new **Parenting Support Group**. Program attendees share real-life parenting experiences, exchange practical strategies, and celebrate their children's strengths — all geared toward becoming the best parents they can be.



Interested in being highlighted on CMHF's social media and in our newsletter? Reach out to smcccall@jacksoncountycare.org.

Staff Spotlight: Susan Jones



What's your favorite part of working at CMHF?

Susan is a Licensed Clinical Social Worker and has served in her role as a CMHF Program Liaison for 22 years. She received her MSW from the University of Kansas in 1993, the same year her daughter was born. During her graduate studies, she interned at two CMHF network agencies: [CAPA](#) and [Cornerstones of Care](#).

Susan began her career in social work at the Children's Division (before cell phones). She worked for the Salvation Army Children's Shelter for nine years as a Social Worker and later as Executive Director. Susan also worked for four years with Catholic Charities of KCMO, where she managed children and family programs and later served as

I love building relationships with agencies and exploring solutions to challenges. I have found the [Value-Based Payment](#) Program the most stimulating and enjoyable work of my career.

Favorite KC restaurant?

Habashi House in City Market!

Go-to drink order

Black coffee or Diet Coke

Associate Director.

In her spare time, Susan combines her love for animals and travel. She once hiked in the mountains of Rwanda and Uganda to see mountain gorillas; on another trip she spent two weeks at a Costa Rican sanctuary caring for sloths.

Back at home, Susan enjoys baking, creating miniatures, walking her dog Zena, yardwork, and treasure hunting in antique malls.

Connect with CMHF!



[View email in browser](#)

Want to stop receiving our emails?
You can [unsubscribe](#) here.